



PART NUMBER

PFF36-400

DESCRIPTION

FRONT LOWER ARM REAR BUSH

INSTALLATION GUIDE

Contents (parts per pack):

2 x Polyurethane Bushes 1 x PTFE/Silicone Grease

2 x Stainless Steel Sleeves

Please read the complete fitting instructions and check package components before fitment. These fitting instructions are to be used as a guide and in conjunction with workshop manual.

It is recommended that:

- all work to be carried out by a licensed technician;*
- all safety precautions adhered to;*
- wheel alignment to be checked and adjusted as required after any suspension work.*
- All fasteners must be tensioned to manufacturer's torque settings.*

Fitting Instructions:

1. Remove the original rubber bush including its outer shell from the arm.
2. Clean any dirt and corrosion from the bore of the arm and file off any sharp edges using a rounded file.
3. Press the polyurethane bush in from the underside of the arm so that the longer tapered end of the bush points upwards. Make sure the lip has popped out of the other side of the arm as shown in Fig. 1.

Tip: Apply some washing-up liquid to the outside of the polyurethane bush to ease fitment.

4. Apply some of the supplied grease to the bore of the polyurethane bush and push the stainless steel sleeve in until flush.

5. Refit the arm to the vehicle and tension all hardware to the manufacturers recommended torque settings

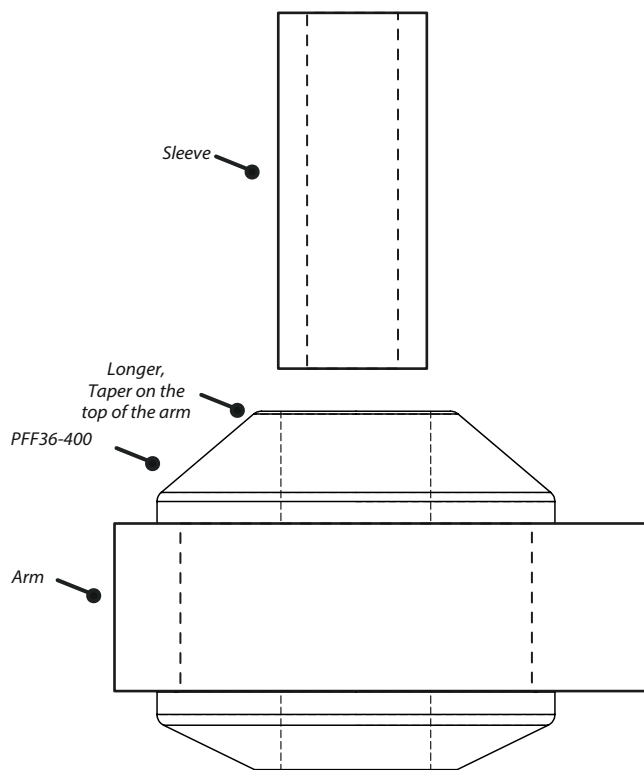


Figure 1

