

POWERFLEX®

PART NUMBER

PFF85-414

DESCRIPTION

FRONT WISHBONE REAR BUSH

INSTALLATION GUIDE

Contents (parts per pack):

- 2 x Pre-assembled Spherical Bearing bushes
- 4 x Polyurethane Dust Covers
- 4 x Stainless Steel Adaptor Sleeves
- 1 x Bearing Grease

Please read the complete fitting instructions and check package components before fitment. These fitting instructions are to be used as a guide and in conjunction with workshop manual.

It is recommended that:

- all work to be carried out by a licensed technician;
- all safety precautions adhered to;
- wheel alignment to be checked and adjusted as required after any suspension work.
- All fasteners must be tensioned to manufacturer's torque settings.

Fitting Instructions:

1. Remove the original rubber bush from the front wishbone.
2. Clean any dirt and corrosion from the bore of the wishbone, and file off any sharp edges.
3. Push the Spherical Bush into the wishbone from the radiused side, with the chamfered edge downwards. Press only on the flat top of the shell until it is approximately 5mm from the top surface of the arm (Figure 2).

Note: it is normal for the bush to fit a different way on each side of the vehicle as the radiused side of the arm can face opposing ways. This is because often the radiused edge of the hole in the wishbone can face opposing ways, depending on which side of the car the bush is being fitted.

4. Depress the polyurethane dust cover and apply some of the supplied grease to the inside of the 'cup' of the dust cover.

5. Line up the dust covers on each end of the bush, and then insert the adaptor sleeves through the dust covers and into the centre of the spherical bush, as in Figure 1.

6. Refit the arm to the car, ensuring all components stay in place on the bush.

7. Tension all hardware to manufacturers recommended torque settings.

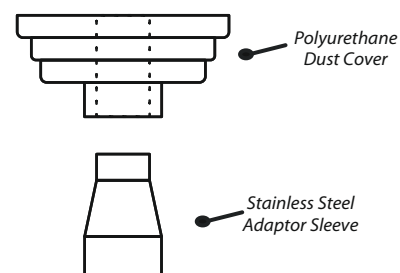
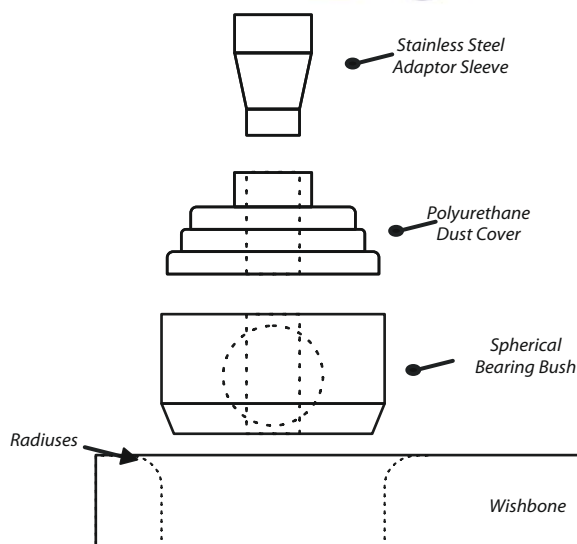


Figure 1

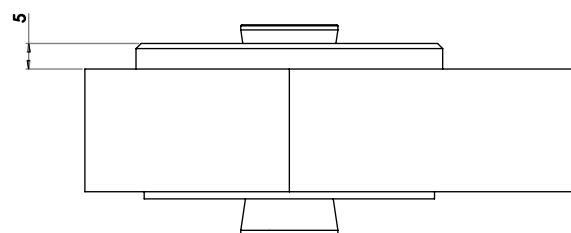


Figure 2